

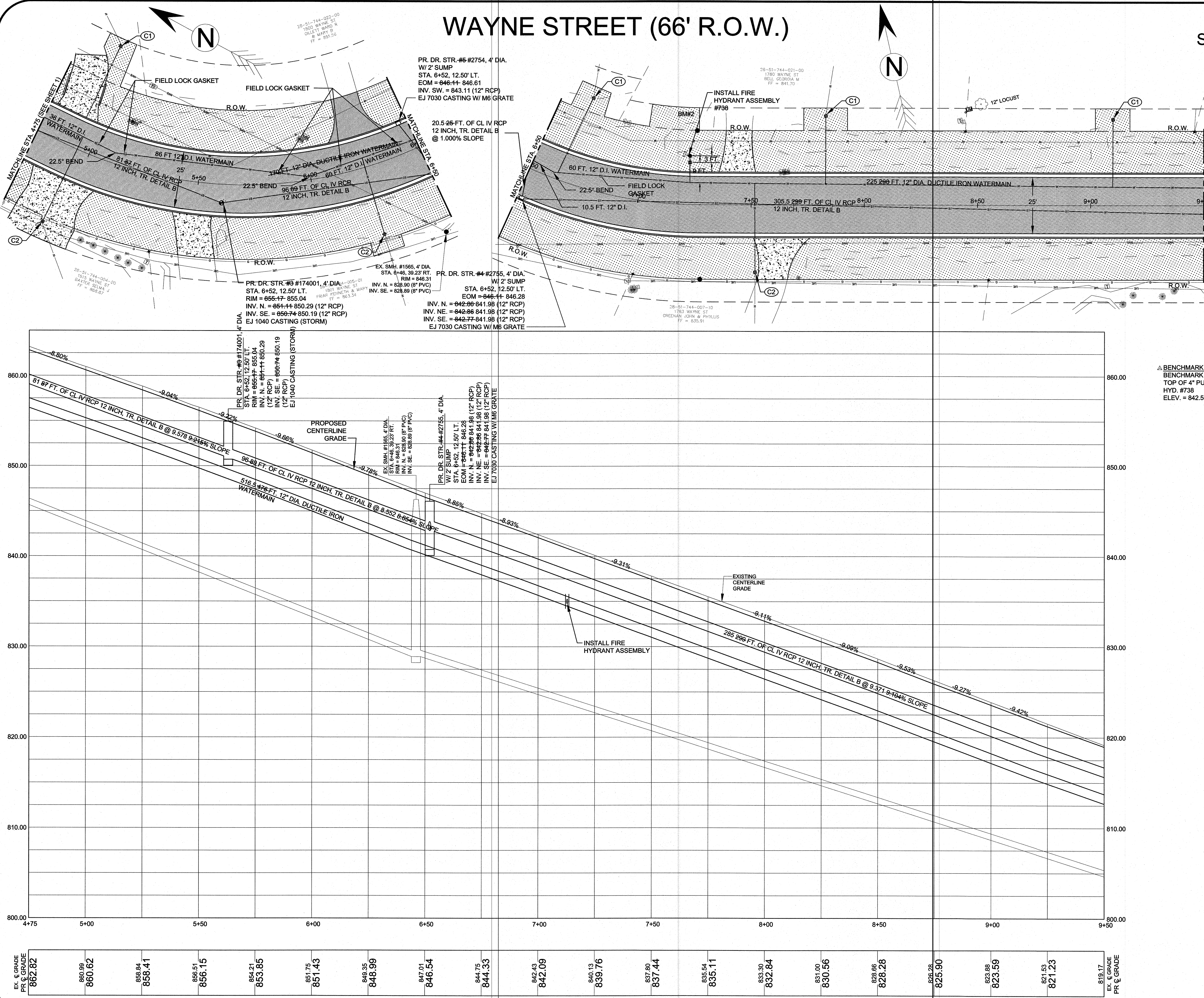
WAYNE STREET (66' R.O.W.)

SCALE: 1" = 20'

- LEGEND**
- FOUND PROPERTY CORNER
 - BENCHMARK
 - SIGN
 - GAS BOX
 - UTILITY POLE
 - GUY WIRE
 - WATER VALVE
 - PED LIGHT POLE
 - ELECTRIC RISER
 - TELEPHONE RISER/BOX
 - FIRE HYDRANT
 - CATCHBASIN
 - BEEHIVE GRATE CATCHBASIN
 - STORM MANHOLE
 - SANITARY MANHOLE
 - DECIDUOUS TREE
 - CONIFEROUS TREE
 - TREE LINE
 - SHRUB LINE
 - OVERHEAD ELECTRIC
 - UNDERGROUND ELECTRIC
 - OVERHEAD TELEPHONE
 - UNDERGROUND TELEPHONE
 - OVERHEAD CABLE TV
 - UNDERGROUND CABLE TV
 - SANITARY SEWER
 - STORM SEWER
 - WATERMAIN
 - GUARDRAIL
 - FENCE
 - TOP/BOTTOM OF SLOPE
- HATCH LEGEND**
- PROPOSED DRIVEWAYS, NON REINFORCED CONC., 6"
 - PROPOSED LAWN AREA

CITY OF TRAVERSE CITY
2013 PAVING AND RESURFACING PROJECTS
PLAN AND PROFILE SHEET

Revision/Issue	Date
PERMIT SET	7-01-13
BID SET	7-16-13
AS-BUILT JLC	11-25-13
Date:	7-01-13
Project No.:	2013-03
Drawn by:	JDM
Scale:	1" = 20'
Sheet No.:	2 OF 4



SCALE: H, 1" = 20' ; V, 1" = 5'